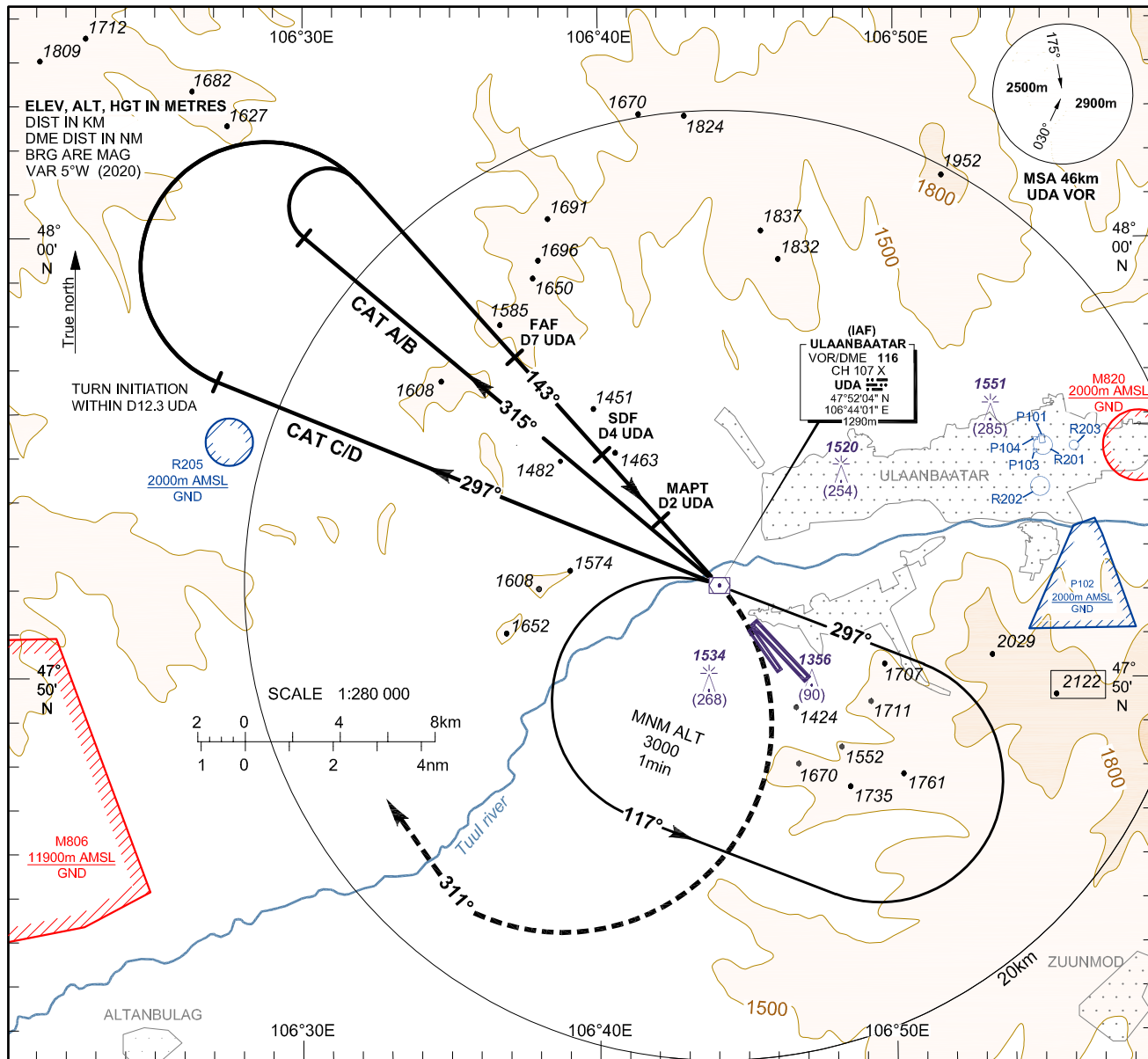


**INSTRUMENT
APPROACH
CHART-ICAO**

**AERODROME ELEV 1331
HEIGHTS RELATED TO
THR RWY 14 - ELEV 1266**

APP 120
TWR 132.7
ATIS 125

**ULAANBAATAR/Buyant-Ukhaa (ZMUB)
VOR/DME RWY 14
ACFT CAT A/B, C/D**



MISSED APPROACH:

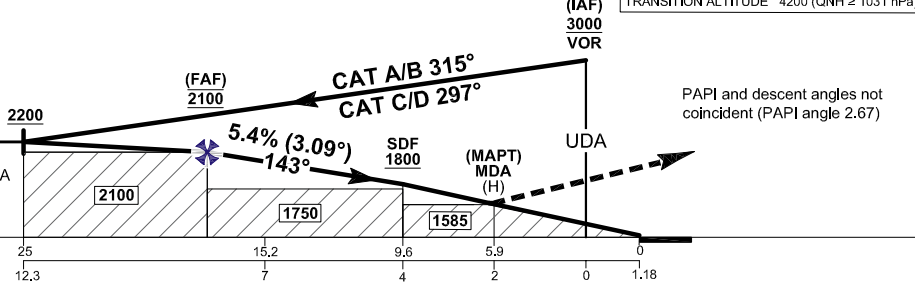
Climb direct to UDA VOR, turn right, track 311°, climb to ALT 2200, then as directed by ATC.

TRANSITION LEVEL 4500
TRANSITION ALTITUDE 3900
TRANSITION ALTITUDE 4200 (QNH ≥ 1031 hPa)

THR ELEV 1266

KM to/from THR RWY 14
NM to/from "UDA" VOR/DME
"UDA" VOR/DME reads 2.2km at THR RWY 14

CAT of ACFT	A	B	C	D
Straight-in	MDA (H)	1600 (334)		
Approach	OCA (H)	1585 (319)		
Circling NOT AUTHORISED				
VIS				
CAT of ACFT	FULL	ALS Out		
A/B	3600m	4400m		
C	4200m	5000m		
D	4600m	5000m		



PAPI and descent angles not coincident (PAPI angle 2.67)

Distance from "UDA" (NM)	FAF	6	5	4	3	MAPT								
Altitude (Height) 3.09° APCH	2100 (834)	2000 (734)	1900 (634)	1800 (534)	1700 (434)	1600 (334)								
Ground Speed	km/h	130	150	170	185	205	225	240	260	280	295	315	335	350
	kt	70	80	90	100	110	120	130	140	150	160	170	180	190
Rate of Descent	m/s	1.89	2.18	2.47	2.69	2.98	3.28	3.49	3.79	4.08	4.29	4.59	4.88	5.10
	ft/min	372	425	478	531	584	637	690	743	796	849	902	955	1008

CHANGE: Descent table, MSA, profile descent slope and ALT, conversion table changed; Editorial.