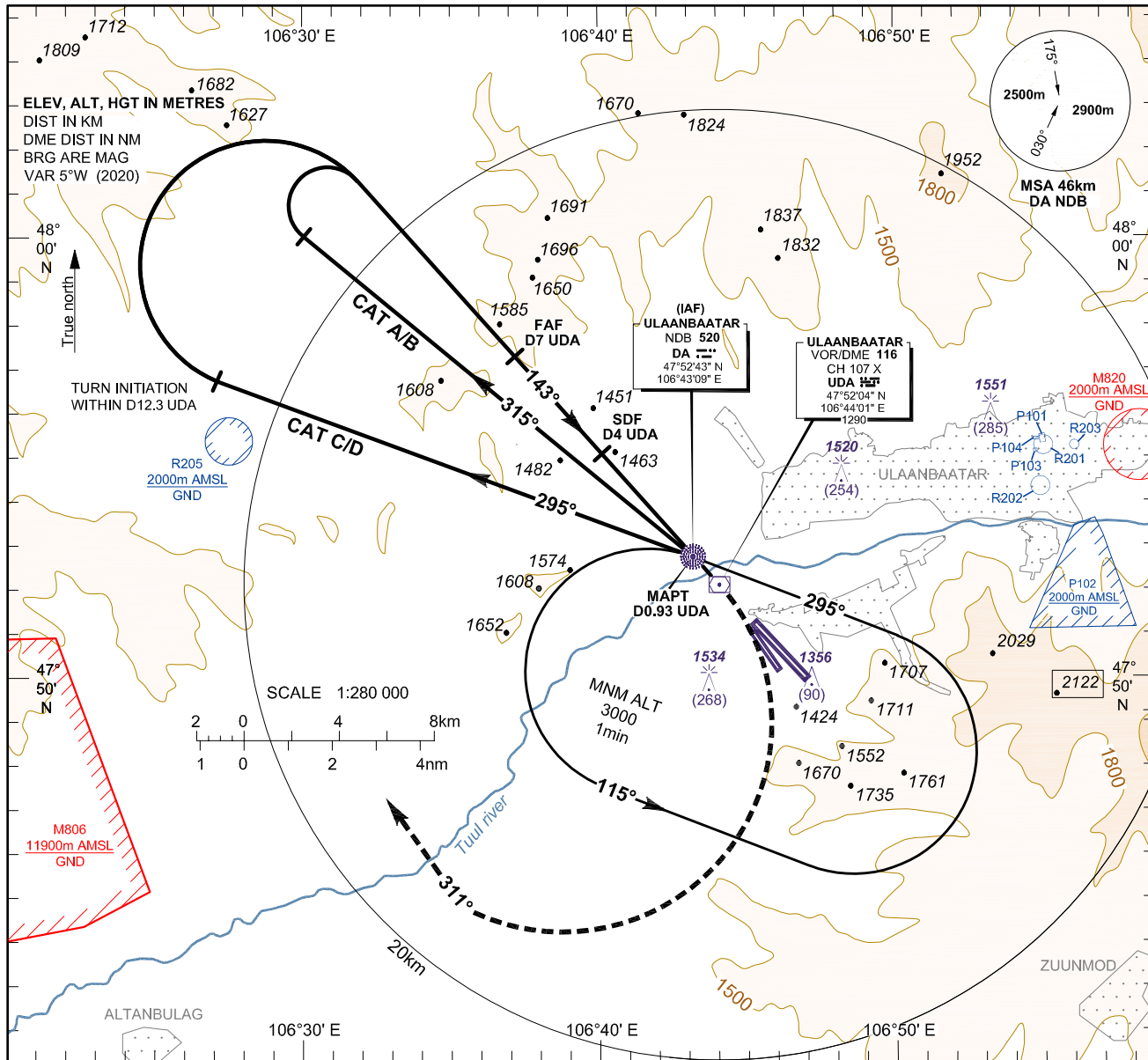


**INSTRUMENT
APPROACH
CHART-ICAO**

**AERODROME ELEV 1331
HEIGHTS RELATED TO
THR RWY 14 - ELEV 1266**

APP 120
TWR 132.7
ATIS 125

**ULAANBAATAR/Buyant-Ukhaa (ZMUB)
NDB/DME RWY 14
ACFT CAT A/B, C/D**



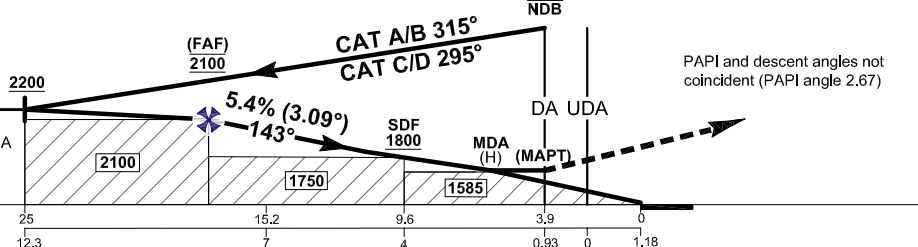
MISSED APPROACH:
At DA NDB, turn right track 311°, climb to ALT 2200, then as directed by ATC.

TRANSITION LEVEL 4500
TRANSITION ALTITUDE 3900
TRANSITION ALTITUDE 4200 (QNH ≥1031 hPa)

THR ELEV 1266

KM to/from THR RWY 14
NM to/from "UDA" VOR/DME
"UDA" VOR/DME reads 2.2km at THR RWY 14

CAT of ACFT	A	B	C	D
Straight-in MDA (H)	1600 (334)			
Approach OCA (H)	1585 (319)			
Circling	NOT AUTHORISED			
VIS				
CAT of ACFT	FULL		ALS Out	
A/B	3600m	4400m		
C	4200m	5000m		
D	4600m	5000m		



Distance from "UDA" (NM)	FAF	6	5	4	3	MAPT							
Altitude (Height) 3.09° APCH	2100 (834)	2000 (734)	1900 (634)	1800 (534)	1700 (434)	1600 (334)							
Ground Speed	130	150	170	185	205	225	240	260	280	295	315	335	350
	70	80	90	100	110	120	130	140	150	160	170	180	190
Rate of Descent	1.89	2.18	2.47	2.69	2.98	3.28	3.49	3.79	4.08	4.29	4.59	4.88	5.10
	372	425	478	531	584	637	690	743	796	849	902	955	1008

CHANGE: Descent table, MSA, profile descent slope and ALT, conversion table changed; Editorial.