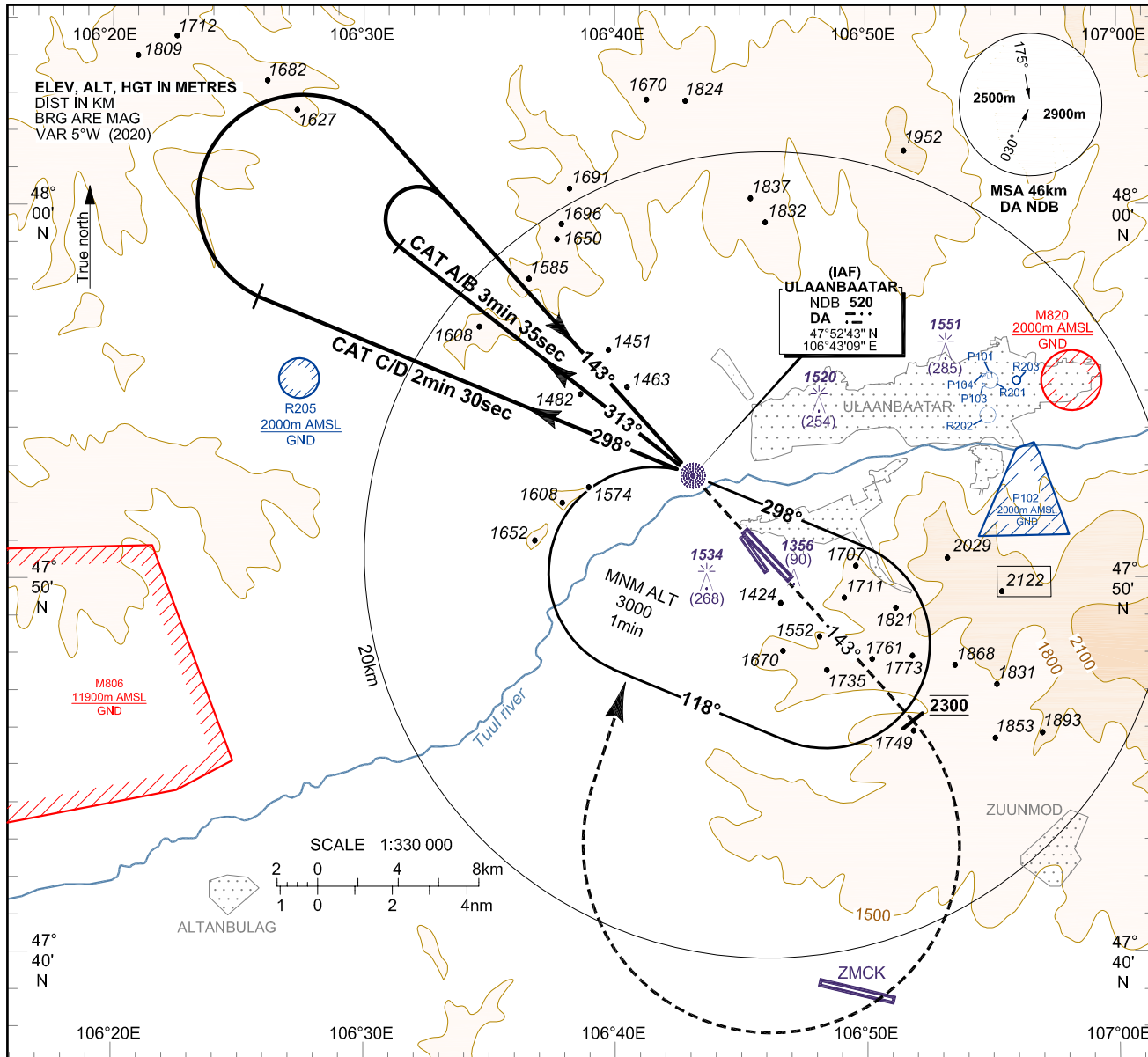


**INSTRUMENT  
APPROACH  
CHART-ICAO**

AERODROME ELEV 1331  
HEIGHTS RELATED TO  
THR RWY 14 - ELEV 1266

APP 120  
TWR 132.7  
ATIS 125

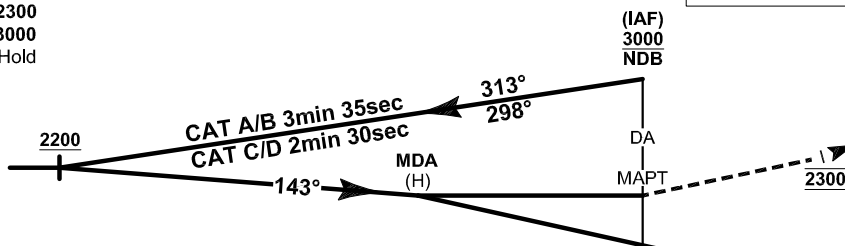
**ULAANBAATAR/Buyant-Ukhaa (ZMUB)  
NDB RWY 14  
ACFT CAT A/B, C/D**



**MISSED APPROACH:**

Climb straight ahead, to ALT 2300  
turn right climbing to ALT 3000  
then direct to "DA" NDB and Hold  
as published.

TRANSITION LEVEL 4500  
TRANSITION ALTITUDE 3900  
TRANSITION ALTITUDE 4200 (QNH±1031hPa)



THR ELEV 1266

km to/from THR RWY 14

"DA" NDB reads 3.9km at THR RWY 14

CAT of ACFT	A	B	C	D
Straight-in	MDA (H)	1950 (684)		
Approach	OCA (H)	1945 (679)		
Circling		NOT AUTHORISED		
VIS				
CAT of ACFT	FULL	ALS Out		
A/B, C/D		5000m		

**CHANGE:** MSA changed.