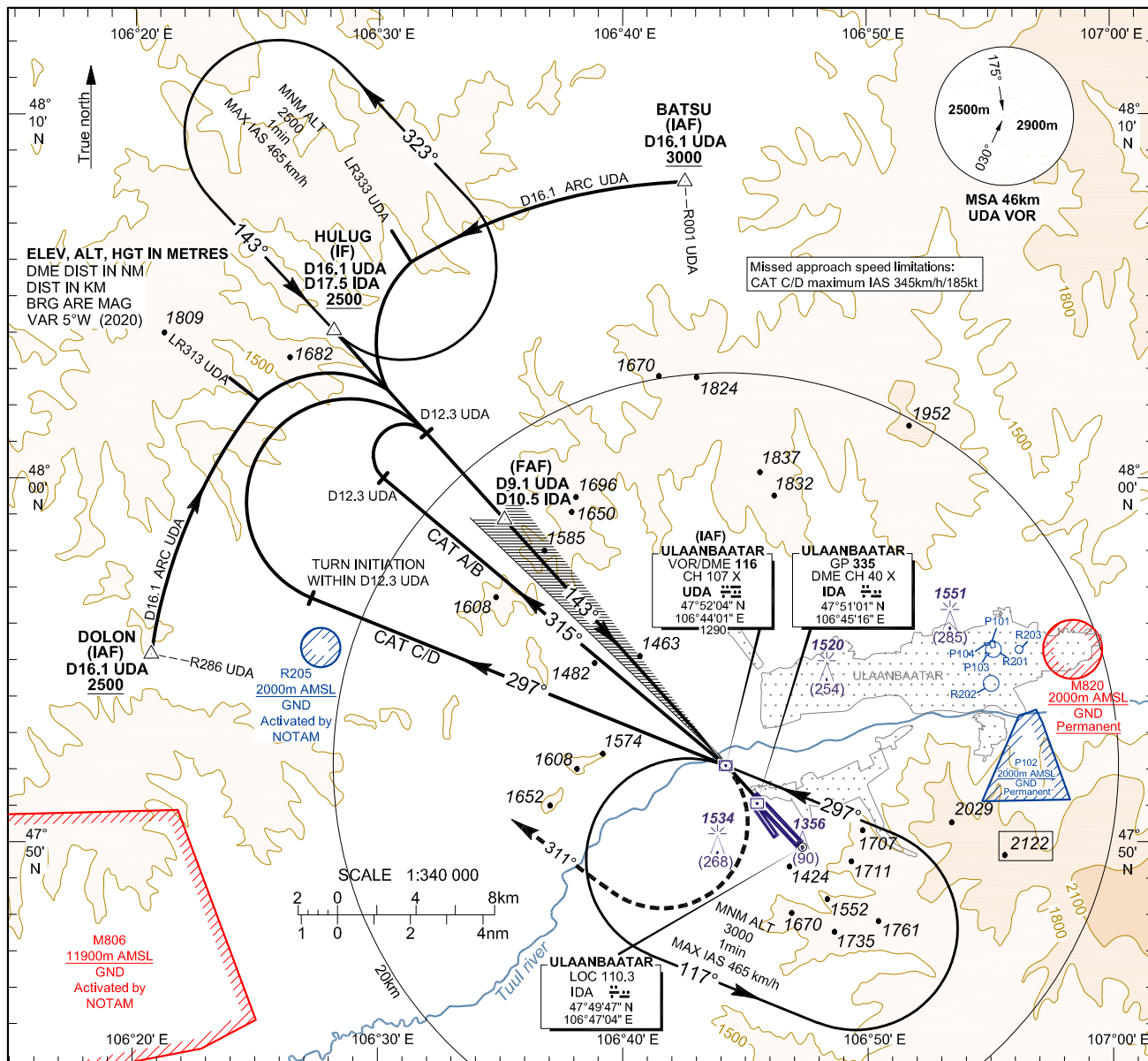


**INSTRUMENT  
APPROACH  
CHART-ICAO**

**AERODROME ELEV 1331  
HEIGHTS RELATED TO  
THR RWY 14 - ELEV 1266**

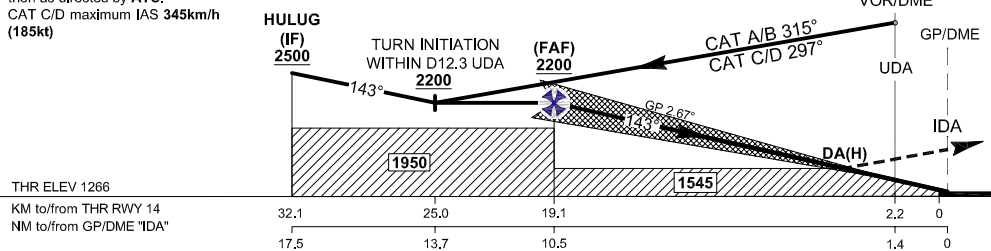
APP 120  
TWR 132.7  
ATIS 125

**ULAANBAATAR/Buyant-Ukhaa (ZMUB)  
ILS RWY 14  
ACFT CAT A/B, C/D**



**MISSED APPROACH:**  
Climb direct to UDA VOR, turn right track 311° until to ALT 2500 then as directed by ATC.  
CAT C/D maximum IAS 345km/h (185kt)

TRANSITION LEVEL 4500  
TRANSITION ALTITUDE 3900  
TRANSITION ALTITUDE 4200 (QNH=1031hPa)



STRAIGHT-IN LANDING RWY 14						
Minimum Missed Approach Gradient						
CAT of ACFT	2.5%				4.5%	
	OCA(H)	DA(H)	VIS		OCA(H)	DA(H)
A/B			2800m	3600m		
C	1545(279)	1550(284)	3400m	4200m	1490(224)	1500(234)
D			3600m	4400m		
Circling NOT AUTHORISED						

	km/h	130	150	170	190	210	230	250	270	290	310	330	350
		kt	70	80	90	100	110	120	130	140	150	160	170
Rate of Descent	m/s	1.68	1.94	2.20	2.46	2.72	2.98	3.24	3.50	3.76	4.02	4.27	4.53
	ft/min	331	378	425	472	519	567	614	661	708	756	803	850

**CHANGE:** MSA changed.