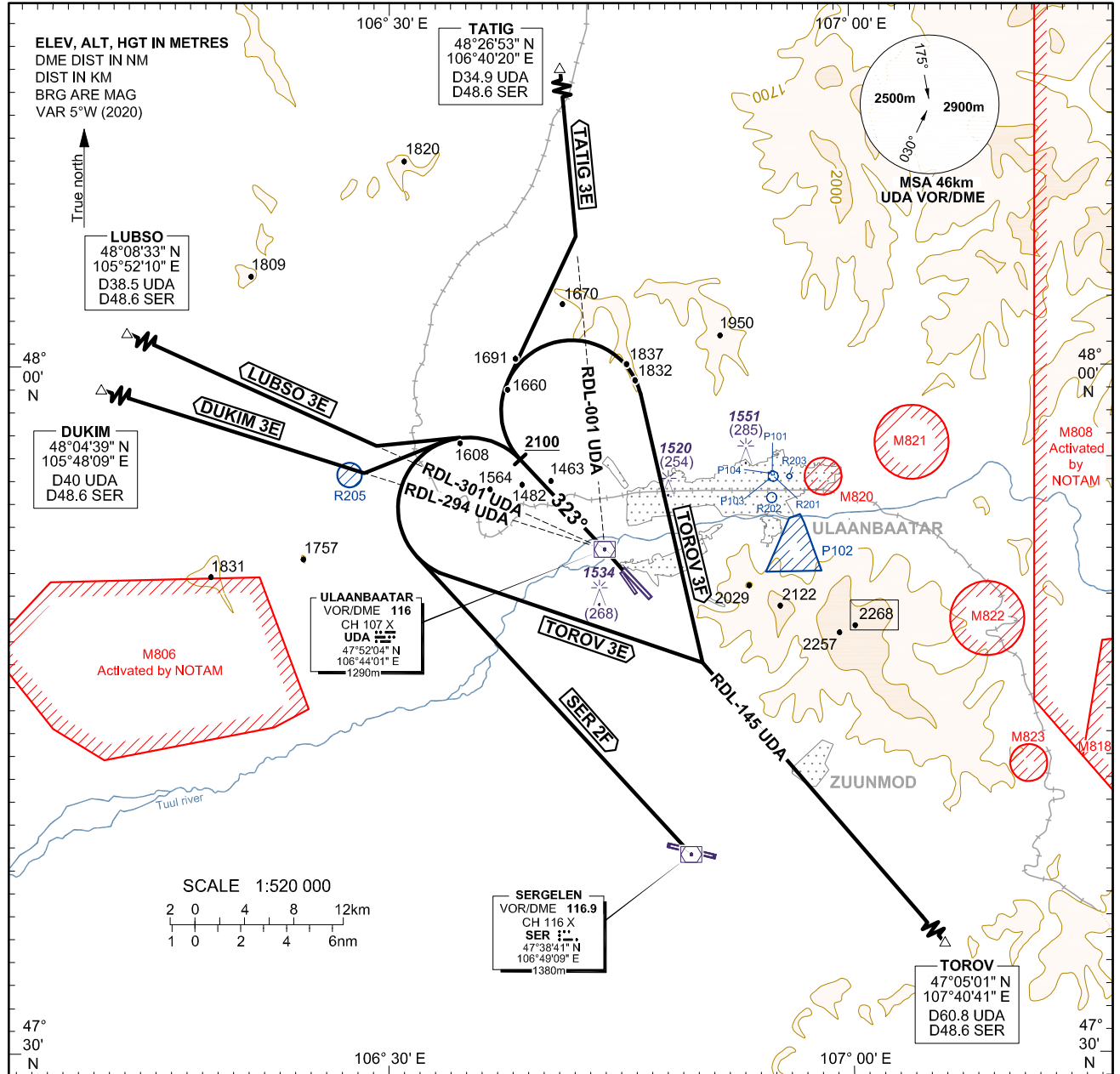


**STANDARD DEPARTURE CHART-
INSTRUMENT (SID) - ICAO**

HEIGHTS RELATED TO
THR RWY 14 - ELEV 1266

APP 120
TWR 132.7
ATIS 125

**ULAANBAATAR/Buyant-Ukhaa (ZMUB)
VOR/DME RWY 32
TATIG 3E, TOROV 3E/3F
SER 2F, DUKIM 3E, LUBSO 3E**



PDG: 3.6% is required until ALT 2100.

TRANSITION ALTITUDE 3900
TRANSITION ALTITUDE 4200 (QNH ≥ 1031 hPa)

RIGHT

For TATIG 3E:
Climb RWY HDG 323° to at or above ALT 2100, turn right to Intercept and proceed via RDL-001° UDA, to TATIG.

For TOROV 3E:
Climb RWY HDG 323° to at or above ALT 2100, turn right to intercept and proceed via RDL-145° UDA to TOROV.

LEFT

For LUBSO 3E:
Climb RWY HDG 323° to at or above ALT 2100, turn left to Intercept and proceed via RDL-301° UDA, to LUBSO.

For DUKIM 3E:
Climb RWY HDG 323° to at or above ALT 2100, turn left to intercept and proceed via RDL-294° UDA, to DUKIM.

For SER 2F:
Climb RWY HDG 323° to at or above ALT 2100, turn left and direct to SER VOR/DME.

For TOROV 3E:
Climb RWY HDG 323° to at or above ALT 2100, turn left to Intercept and proceed via RDL-145° UDA, to TOROV.

RVR 550m

Ground Speed	km/h	205	240	280	315	350	390	425	460	500
	kt	110	130	150	170	190	210	230	250	270
Rate of Climb at 3.3%	m/s	1.88	2.20	2.57	2.89	3.21	3.58	3.90	4.22	4.58
	ft/min	368	434	501	568	635	702	769	835	902
Rate of Climb at 3.6%	m/s	2.05	2.40	2.80	3.15	3.50	3.90	4.25	4.60	5.00
	ft/min	401	474	547	620	693	766	838	911	984

CHANGE: MSA changed; Editorial.