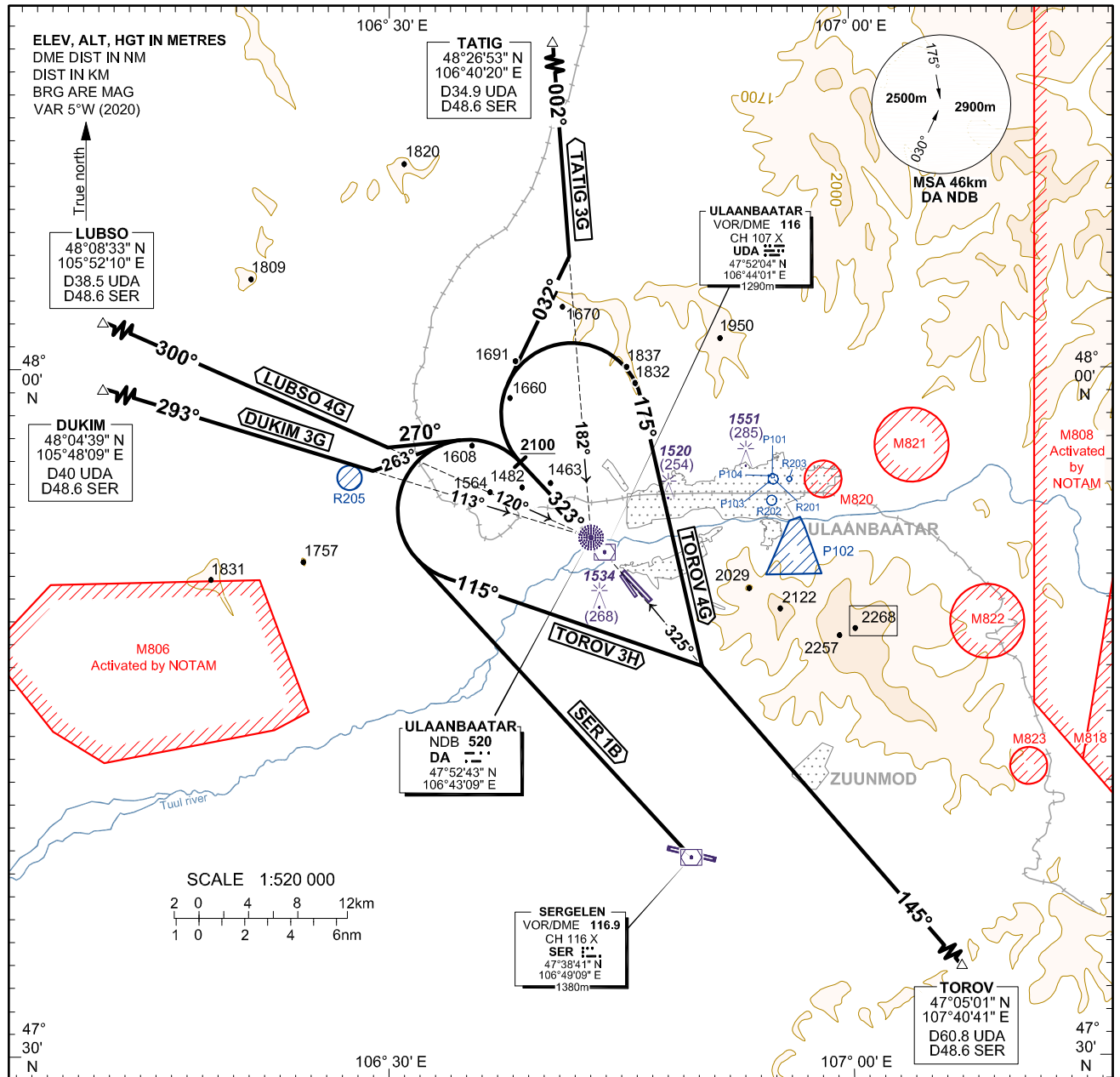


**STANDARD DEPARTURE CHART -  
INSTRUMENT (SID) - ICAO**

HEIGHTS RELATED TO  
THR RWY 14 - ELEV 1266

APP 120  
TWR 132.7  
ATIS 125

**ULAANBAATAR/Buyant-Ukhaa (ZMUB)  
NDB RWY 32  
TATIG 3G, TOROV 4G/3H  
SER 1B, DUKIM 3G, LUBSO 4G**



**PDG: 3.6% is required until ALT 2100.**

TRANSITION ALTITUDE 3900  
TRANSITION ALTITUDE 4200 (QNH ≥ 1031 hPa)

**RIGHT**

**For TATIG 3G:**  
Climb RWY HDG 323° to at or above ALT 2100, turn right to HDG 032°, then intercept track 002° to TATIG.

**For TOROV 4G:**  
Climb RWY HDG 323° to at or above ALT 2100, turn right to HDG 175°, then Intercept track 145° to TOROV.

**LEFT**

**For LUBSO 4G:**  
Climb RWY HDG 323° to at or above ALT 2100, turn left to HDG 270°, then Intercept track 300° to LUBSO.

**For DUKIM 3G:**  
Climb RWY HDG 323° to at or above ALT 2100, turn left to HDG 263°, then intercept track 293° to DUKIM.

**For SER 1B:**  
Climb RWY HDG 323° to at or above ALT 2100, then turn left and direct to SER VOR/DME.

**For TOROV 3H:**  
Climb RWY HDG 323° to at or above ALT 2100, turn left to HDG 115°, then Intercept track 145° to TOROV.

RVR	550m
-----	------

Ground Speed	km/h	205	240	280	315	350	390	425	460	500
	kt	110	130	150	170	190	210	230	250	270
Rate of Climb at 3.3%	m/s	1.88	2.20	2.57	2.89	3.21	3.58	3.90	4.22	4.58
	ft/min	368	434	501	568	635	702	769	835	902
Rate of Climb at 3.6%	m/s	2.05	2.40	2.80	3.15	3.50	3.90	4.25	4.60	5.00
	ft/min	401	474	547	620	693	766	838	911	984

**CHANGE:** MSA changed; Editorial.