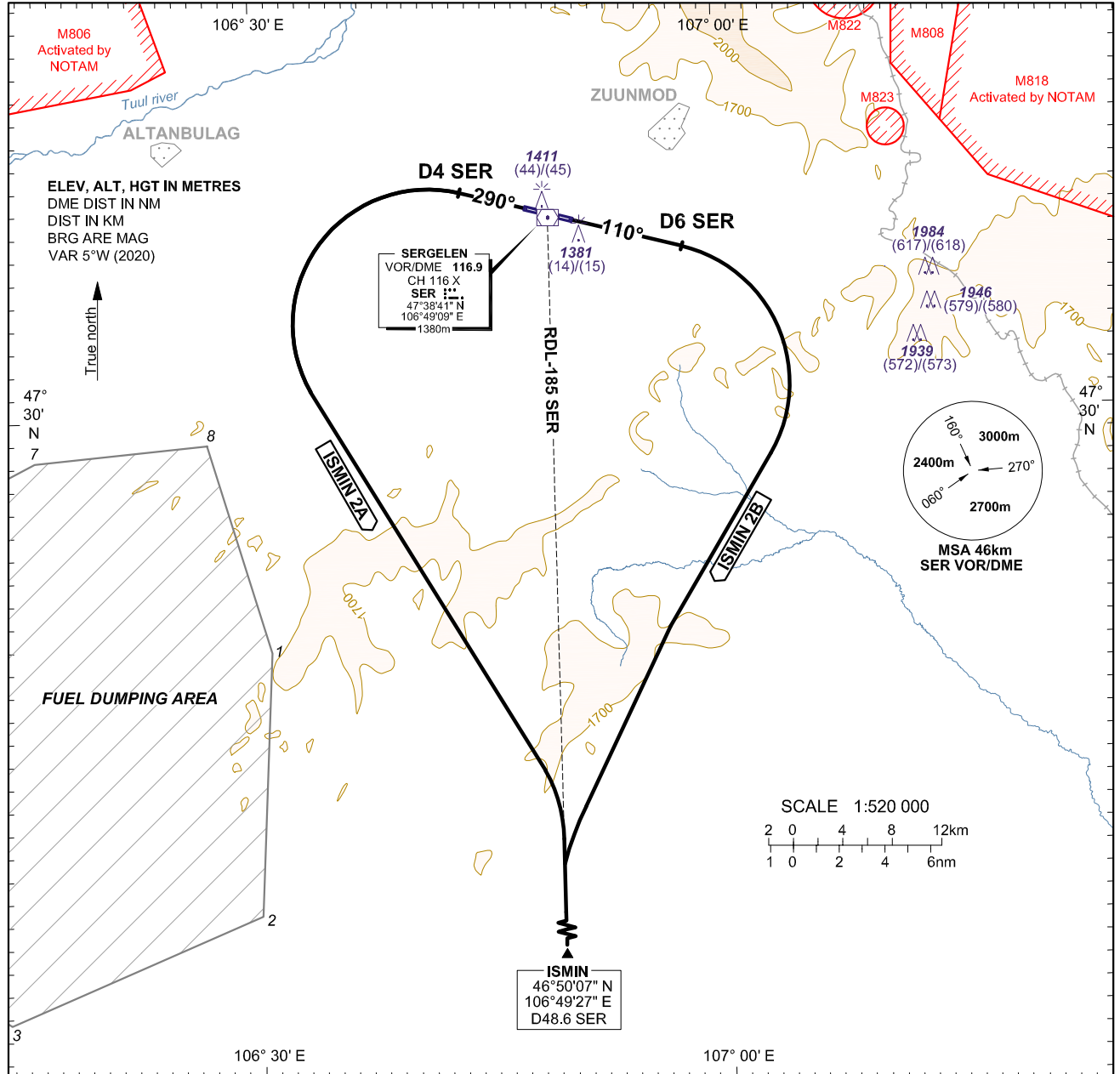


**STANDARD DEPARTURE CHART -
INSTRUMENT (SID) - ICAO**

AERODROME ELEV - 1367
HEIGHTS RELATED TO
THR RWY 11 - ELEV 1367
THR RWY 29 - ELEV 1366

APP 120
TWR 129

**ULAANBAATAR/Chinggis Khaan (ZMCK)
RWY 11/29
ISMIN 2A/2B**



TRANSITION ALTITUDE 3900
TRANSITION ALTITUDE 4200 (QNH ≥ 1031 hPa)

For ISMIN 2A:

Climb RWY HDG 290° to **D4 SER**, turn left, to intercept and proceed via **RDL-185 SER**, to **ISMIN**.
PDG: 3.3%

For ISMIN 2B:

Climb RWY HDG 110° to **D6 SER**, turn right, to intercept and proceed via **RDL-185 SER**, to **ISMIN**.
PDG: 4% is required until ALT 2000, then 3.3%.

COORDINATES OF DUMPING AREA

Points	LAT (N)	LONG (E)
1	47°19'53"	106°30'51"
2	47°08'25"	106°29'58"
3	47°03'47"	106°13'47"
4	47°09'23"	106°01'43"
5	47°14'52"	105°58'22"
6	47°24'31"	106°04'45"
7	47°28'19"	106°15'47"
8	47°28'59"	106°26'54"

RVR	550m									
	km/h	205	240	280	315	350	390	425	460	500
Ground Speed	kt	110	130	150	170	190	210	230	250	270
	m/s	1.88	2.20	2.57	2.89	3.21	3.57	3.90	4.22	4.58
Rate of Climb at 3.3%	ft/min	368	434	501	568	635	702	769	835	902
	m/s	2.28	2.67	3.11	3.50	3.89	4.33	4.72	5.11	5.56
Rate of Climb at 4%	ft/min	446	527	608	689	770	851	932	1013	1094
	m/s	2.28	2.67	3.11	3.50	3.89	4.33	4.72	5.11	5.56

CHANGE: MSA and TA changed; Editorial.