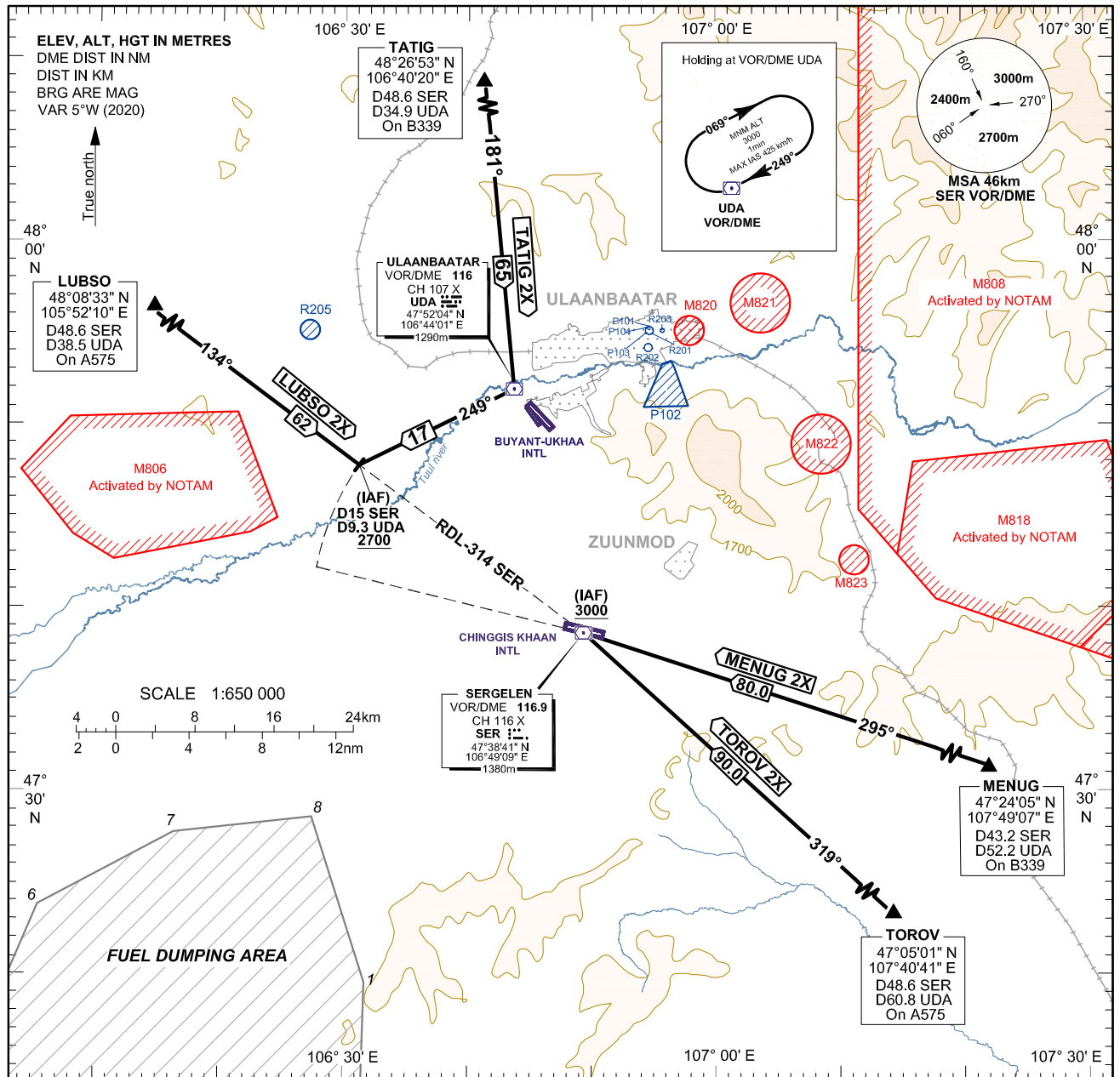


**STANDARD ARRIVAL CHART -
INSTRUMENT (STAR) - ICAO**

APP 120
TWR 129

**ULAANBAATAR/Chinggis Khaan (ZMCK)
RWY 11
LUBSO 2X, TOROV 2X
MENUM 2X, TATIG 2X**



GENERAL INFORMATION

TRANSITION ALTITUDE 3900
TRANSITION ALTITUDE 4200 (QNH ≥ 1031 hPa)

MENUM 2X ARRIVAL:

From over **MENUM**, via **RDL-115 SER** to IAF (SER), Cross IAF (SER) at or above **ALT 3000**.

TOROV 2X ARRIVAL:

From over **TOROV**, via **RDL-139 SER** to IAF (SER), Cross IAF (SER) at or above **ALT 3000**.

LUBSO 2X ARRIVAL:

From over **LUBSO**, via **RDL-314 SER** to IAF, Cross IAF at or above **ALT 2700**.

TATIG 2X ARRIVAL:

From over **TATIG**, cross **UDA**, via **UDA RDL-249** to IAF, Cross IAF at or above **ALT 2700**.

COORDINATES OF DUMPING AREA

Points	LAT (N)	LONG (E)
1	47°19'53"	106°30'51"
2	47°08'25"	106°29'58"
3	47°03'47"	106°13'47"
4	47°09'23"	106°01'43"
5	47°14'52"	105°58'22"
6	47°24'31"	106°04'45"
7	47°28'19"	106°15'47"
8	47°28'59"	106°26'54"

CHANGE: MSA and TA changed; Editorial.