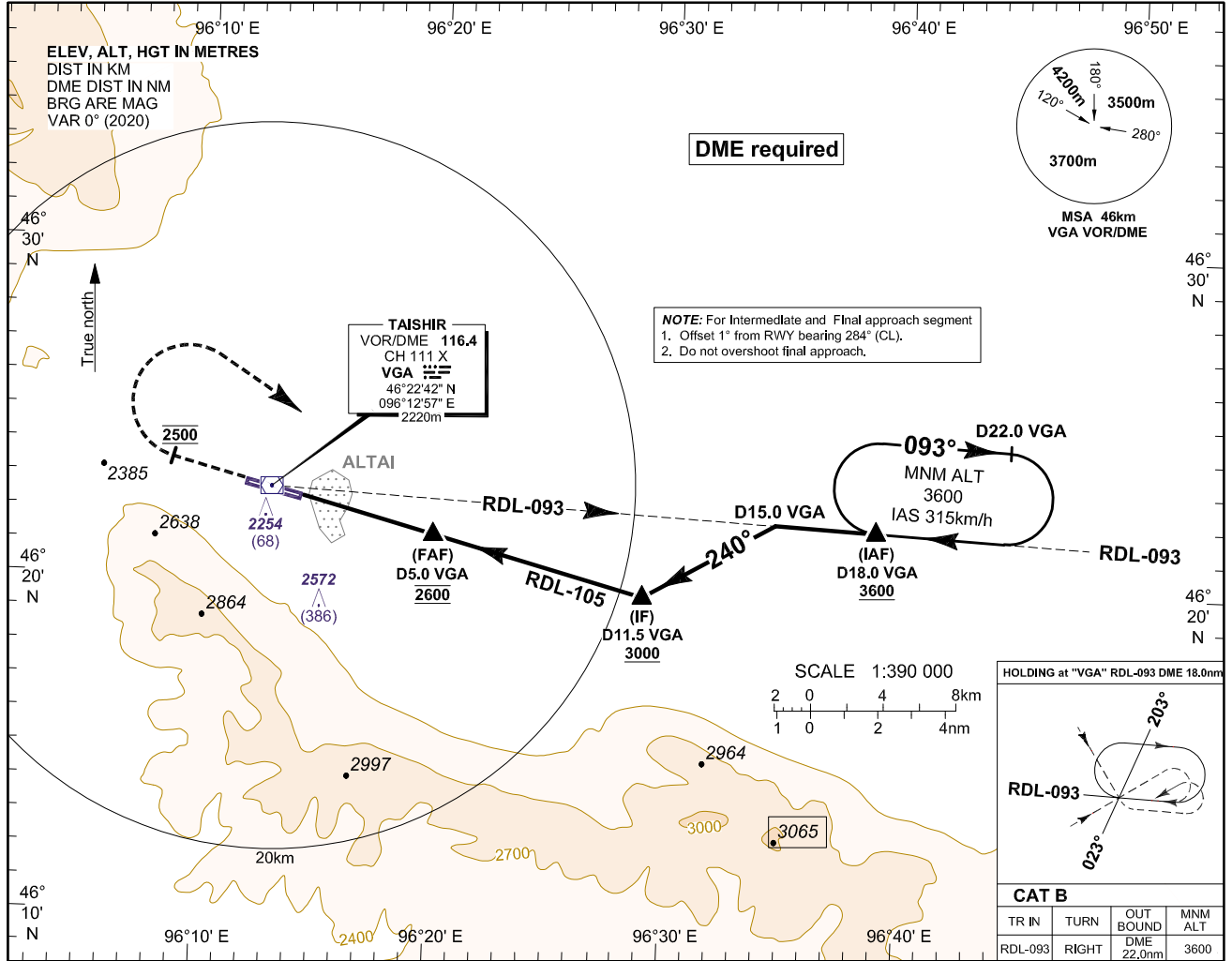


**INSTRUMENT
APPROACH
CHART-ICAO**

AERODROME ELEV 2219
HEIGHTS RELATED TO
THR RWY 28 - ELEV 2186

APP 130

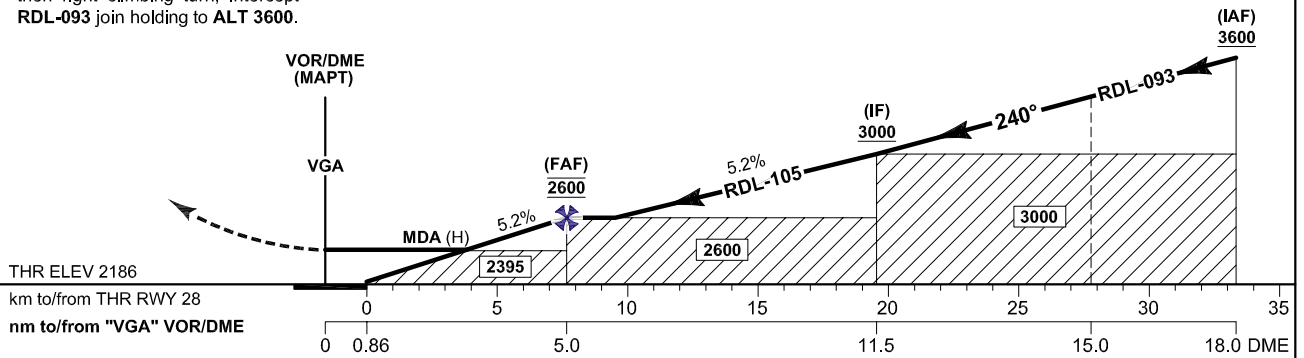
**GOBI-ALTAI/Altai (ZMAT)
VOR Z RWY 28
ACFT CAT B**



MISSED APPROACH:

**Timing NOT authorized for
defining the MAPT.**
Climb straight ahead to ALT 2500
then right climbing turn, intercept
RDL-093 join holding to ALT 3600.

TRANSITION LEVEL 4500
TRANSITION ALTITUDE 3900
TRANSITION ALTITUDE 4200 (QNH≥1031hPa)



CAT of ACFT		
		B
VOR/DME	MDA (H)	2400 (214)
	OCA (H)	2395 (209)
VIS		
CAT of ACFT		FULL ALS out
B		2000m 2400m

	Distance from "VGA" (NM)	2.9	3.0	4.0	5.0			
		Altitude (Height) 5.2% APCH	2400 (214)	2410 (224)	2505 (319)	2600 (414)		
Ground Speed	km/h	130	150	170	190	210	230	250
	kt	70	80	90	100	110	120	130
Rate of Descent	m/s	1.89	2.18	2.47	2.77	3.06	3.35	3.64
	ft/min	371	425	478	531	584	637	690

CHANGE: Spot ELEV and conversion table changed.