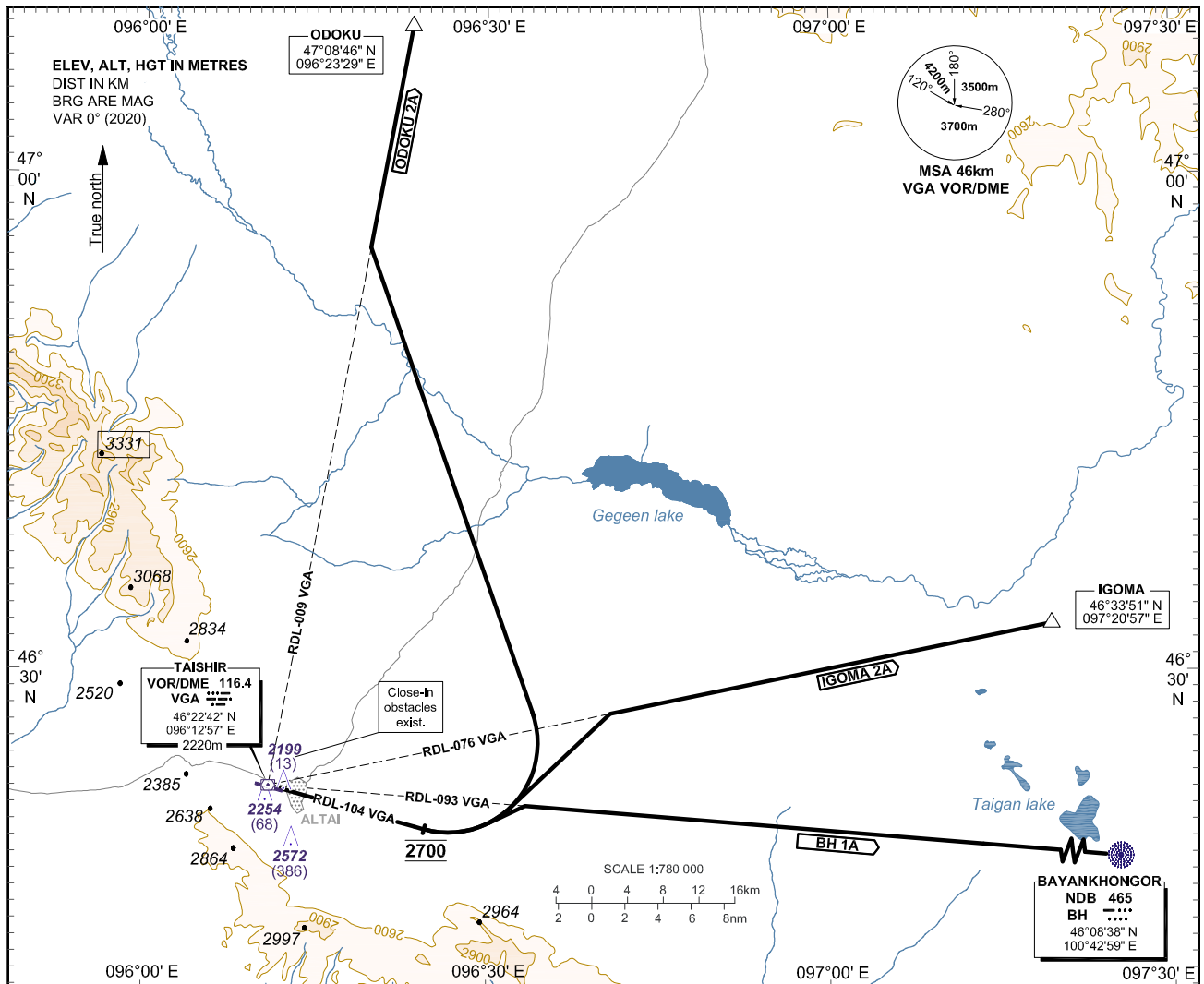


**STANDARD DEPARTURE CHART -  
INSTRUMENT (SID) - ICAO**

AERODROME ELEV 2219  
HEIGHTS RELATED TO  
THR RWY 28 - ELEV 2186

APP 130

**GOBI-ALTAI/Altai (ZMAT)**  
RWY 10  
BH 1A, IGOMA 2A, ODOKU 2A  
ACFT CAT B/C



TRANSITION ALTITUDE 3900  
TRANSITION ALTITUDE 4200 (QNH±1031hPa)

**RWY 10 - FOR ALL DEPARTURES**

**NO TURN before DER.**

After take-off, intercept **RDL 104 "VGA" VOR**, Climb to **ALT 2700**

**For BH 1A:**

- Turn left at **ALT 2700**
- Continue climb, intercept **RDL-093 VGA**
- Track to **BAYANKHONGOR (BH)**

**For IGOMA 2A:**

- Turn left at **ALT 2700**
- Continue climb, intercept **RDL-076 VGA**
- Track to **IGOMA**

**For ODOKU 2A:**

- Turn left at **ALT 2700**
- Continue climb, intercept **RDL-009 VGA**
- Track to **ODOKU**

VIS 800m										
Ground Speed	km/h	240	280	315	350	390	425	460	500	
	kt	130	150	170	190	210	230	250	270	
Rate of Climb at 3.3%	m/s	2.20	2.57	2.89	3.21	3.58	3.90	4.22	4.58	
	ft/min	434	501	568	635	702	769	835	902	

**CHANGE:** Spot ELEV and conversion table changed; Reporting point corrected.