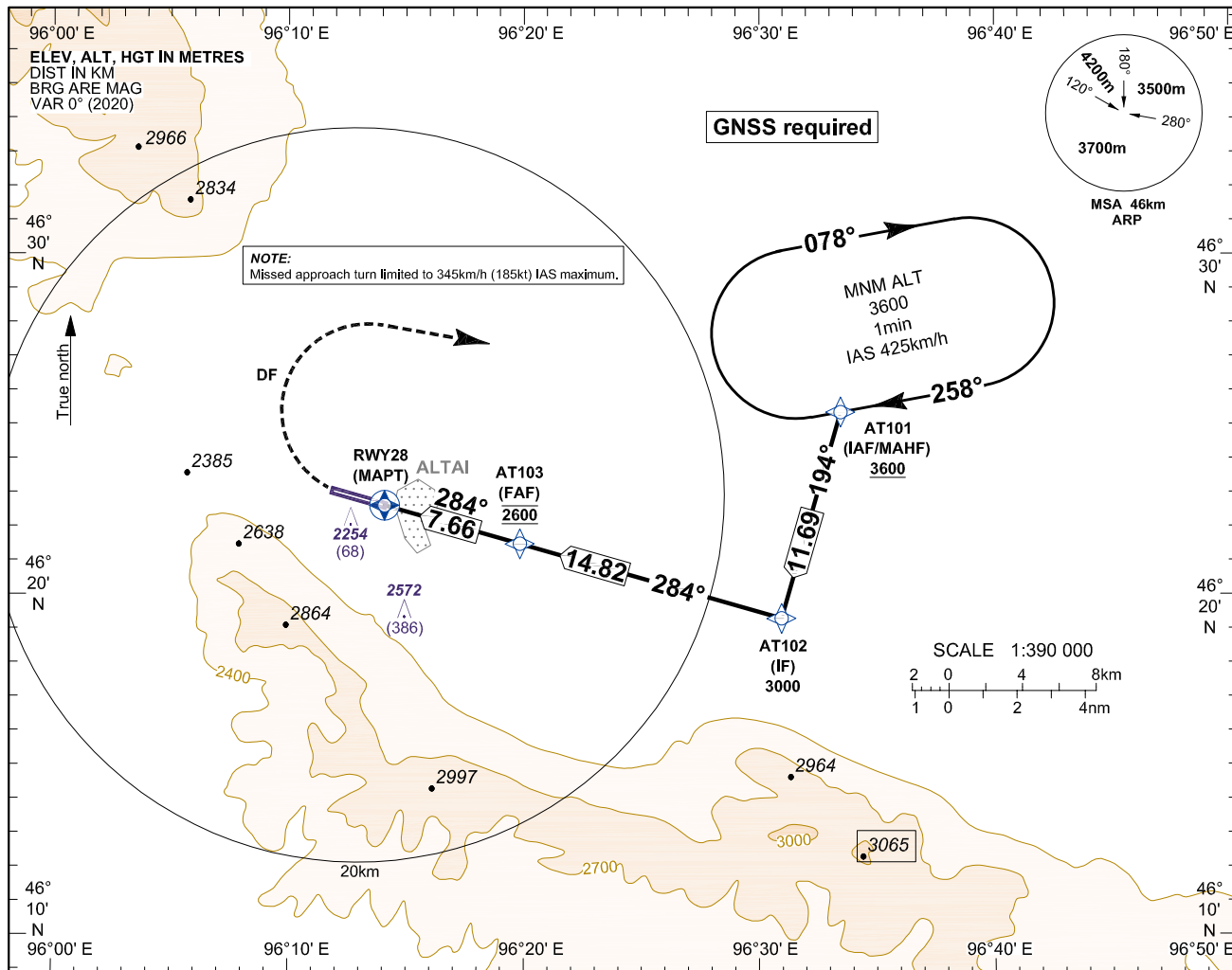


**INSTRUMENT
APPROACH
CHART-ICAO**

AERODROME ELEV 2219
HEIGHTS RELATED TO
THR RWY 28 - ELEV 2186

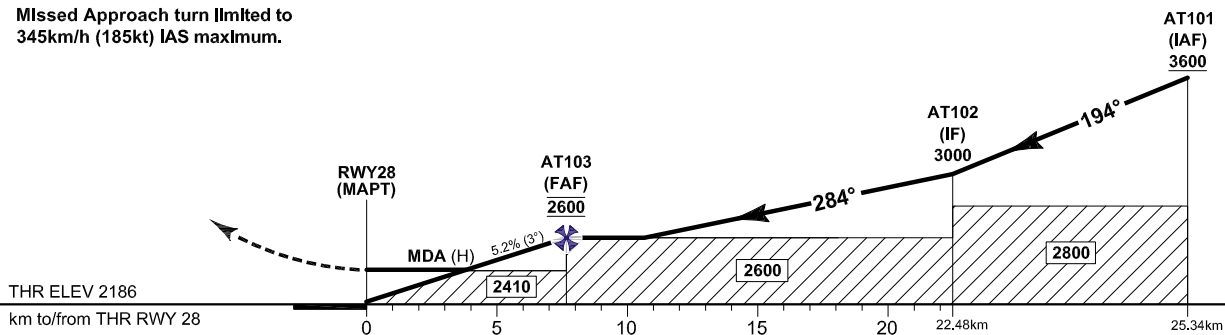
APP 130

**GOBI-ALTAI/Altai (ZMAT)
RNP RWY 28 (LNAV only)
ACFT CAT B/C**



MISSED APPROACH:
NO TURN before MAPT.
Turn right direct to AT101 and hold to ALT 3600.
Missed Approach turn limited to 345km/h (185kt) IAS maximum.

TRANSITION LEVEL 4500
TRANSITION ALTITUDE 3900
TRANSITION ALTITUDE 4200 (QNH≥1031hPa)



CAT of ACFT	B	C
LNAV	MDA (H) 2450 (264)	
	OCA (H) 2410 (224)	
VIS		
CAT of ACFT	FULL	ALS out
B	2400m	2800m
C	3000m	3400m

km to NEXT WPT	RWY28	1.9	3.7	5.6	FAF				
Altitude (Height)		2300 (114)	2395 (209)	2495 (309)	2600 (414)				
Ground Speed	km/h	170	185	205	225	240	260	280	300
	kt	90	100	110	120	130	140	150	160
Rate of Descent	m/s	2.47	2.69	2.98	3.27	3.49	3.78	4.08	4.37
	ft/min	478	531	584	637	690	743	796	849
FAF-MAPT 7.66km	min:s	2:44	2:29	2:15	2:03	1:55	1:46	1:39	1:33

CHANGE: Spot ELEV and conversion table changed.