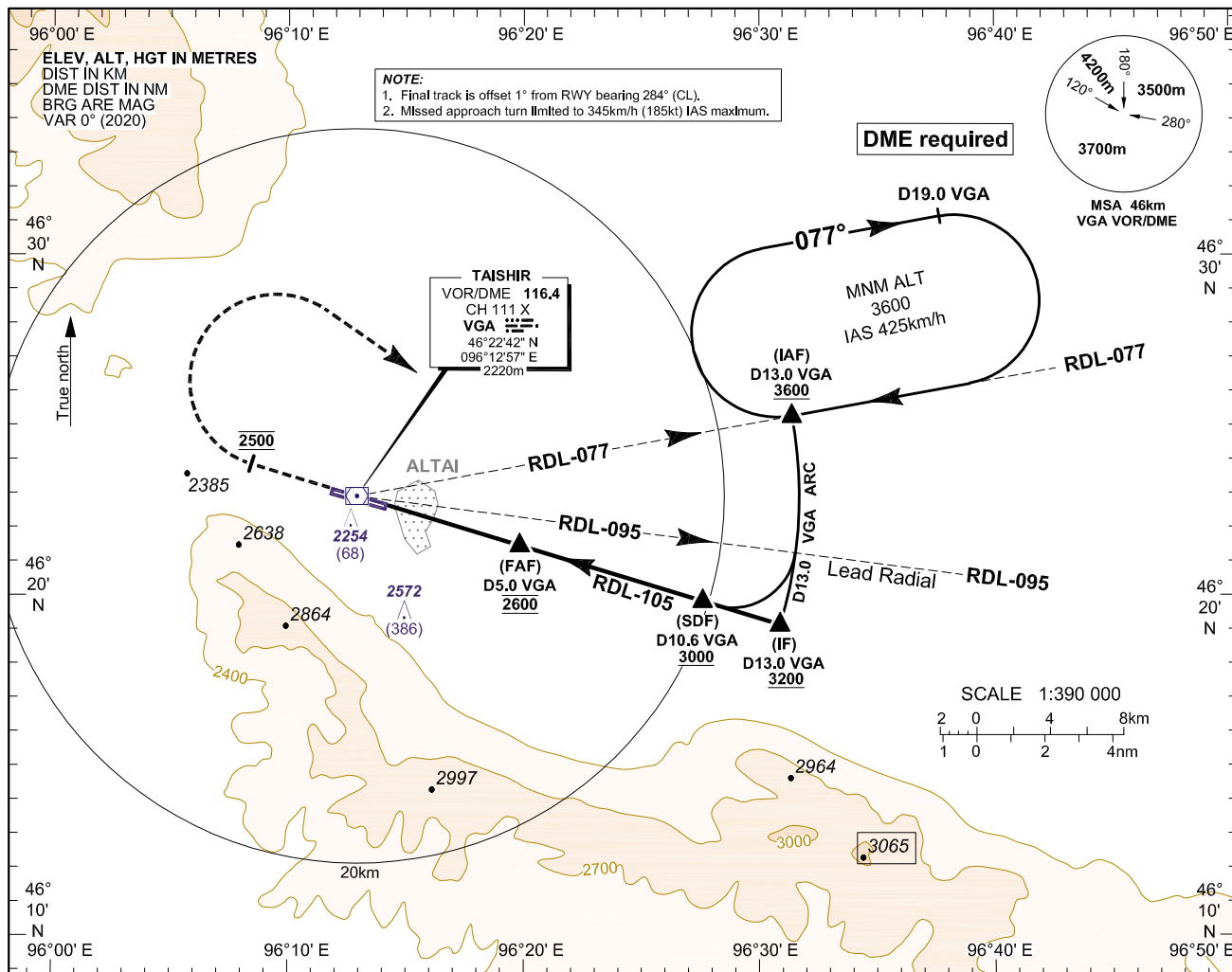


**INSTRUMENT
APPROACH
CHART-ICAO**

AERODROME ELEV 2219
HEIGHTS RELATED TO
THR RWY 28 - ELEV 2186

APP 130

**GOBI-ALTAI/Altai (ZMAT)
VOR Y RWY 28
ACFT CAT B/C**



MISSED APPROACH:

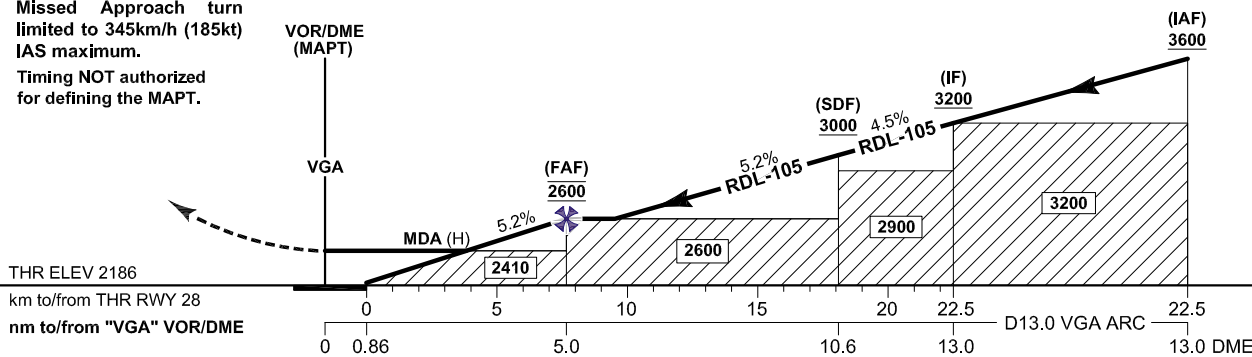
NO TURN before MAPT.

Climb straight ahead to ALT 2500 then turn right to intercept RDL-077 and hold to ALT 3600.

Missed Approach turn limited to 345km/h (185kt) IAS maximum.

Timing NOT authorized for defining the MAPT.

TRANSITION LEVEL 4500
TRANSITION ALTITUDE 3900
TRANSITION ALTITUDE 4200 (QNH≥1031hPa)



CAT of ACFT		B	C
VOR/DME	MDA (H)	2450 (264)	
	OCA (H)	2410 (224)	
VIS			
CAT of ACFT		FULL	ALS out
B		2400m	2800m
C		3000m	3400m

Distance from "VGA" (NM)		3.0	4.0	5.0					
Altitude (Height) 5.2% APCH		2410 (224)	2505 (319)	2600 (414)					
Ground Speed	km/h	170	185	205	225	240	260	280	300
	kt	90	100	110	120	130	140	150	160
Rate of Descent	m/s	2.47	2.69	2.98	3.27	3.49	3.78	4.08	4.37
	ft/min	478	531	584	637	690	743	796	849

CHANGE: Spot ELEV and conversion table changed.