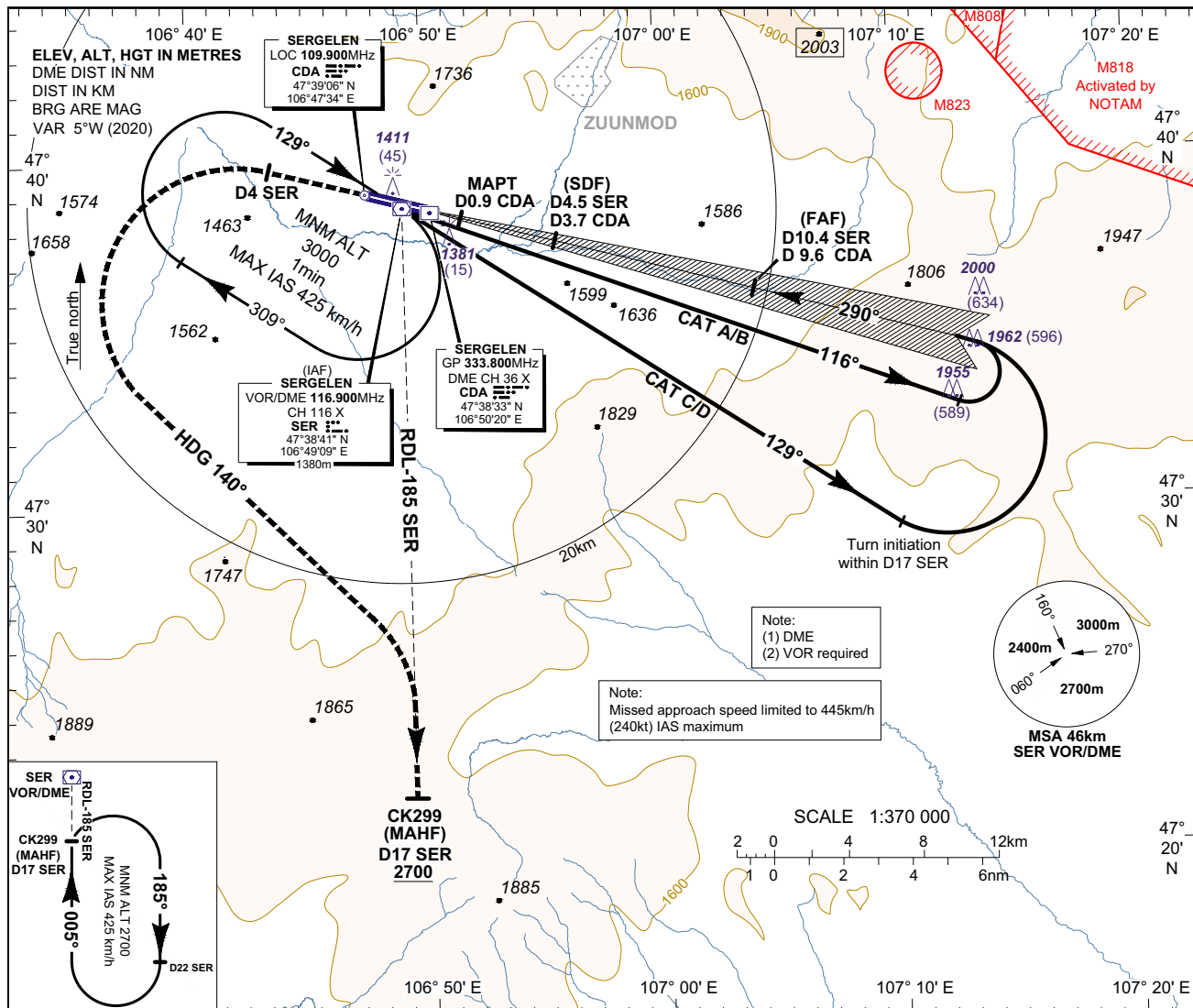


**INSTRUMENT
APPROACH
CHART-ICAO**

AERODROME ELEV 1367
HEIGHTS RELATED TO
THR RWY 29 - ELEV 1366
(OCH & MDH RELATED TO AD ELEV)

APP 120.000
TWR 129.000

ULAANBAATAR/Chinggis Khaan (ZMCK)
LOC Y RWY 29
ACFT CAT A/B, C/D

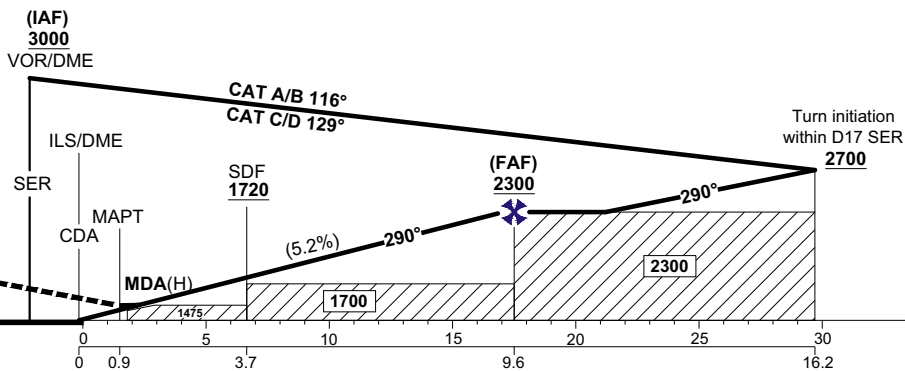


"CDA" ILS/DME NM	MAPT	2	3	4	5	6	7	8	9	FAF
ALT 5.2% APCH (m)	1500	1560	1660	1755	1850	1950	2045	2145	2240	2300

TRANSITION LEVEL 4500
TRANSITION ALTITUDE 3900
TRANSITION ALTITUDE 4200 (QNH ≥ 1031 hPa)

MISSED APPROACH:

Climb on HDG 290° to D4 SER, turn left, HDG 140° to intercept and proceed via RDL-185 SER to CK299 and hold to ALT 2700.



CAT of ACFT	Minimum Missed Approach Gradient 2.5%					
	LOC		Circling			
	OCA(H)	MDA(H)	FULL VIS	ALS out VIS	MDA(H) VIS	
A/B	1475(108)	1500(133)	1600m	2400m	1600(233)	2600m
C	1475(108)	1500(133)	1800m	2600m	1750(383)	5000m
D	1475(108)	1500(133)	2000m	2800m	1800(433)	5000m

Note: Circling to SOUTH side of RWY only.

Ground Speed	km/h	185	205	225	240	260	280	300	315	330
		kt	100	110	120	130	140	150	160	170
Rate of Descent	m/s	2.69	2.98	3.30	3.49	3.78	4.08	4.37	4.59	4.80
		ft/min	531	584	637	690	743	796	849	902

CHANGE: OBST and conversion table changed; Editorial.