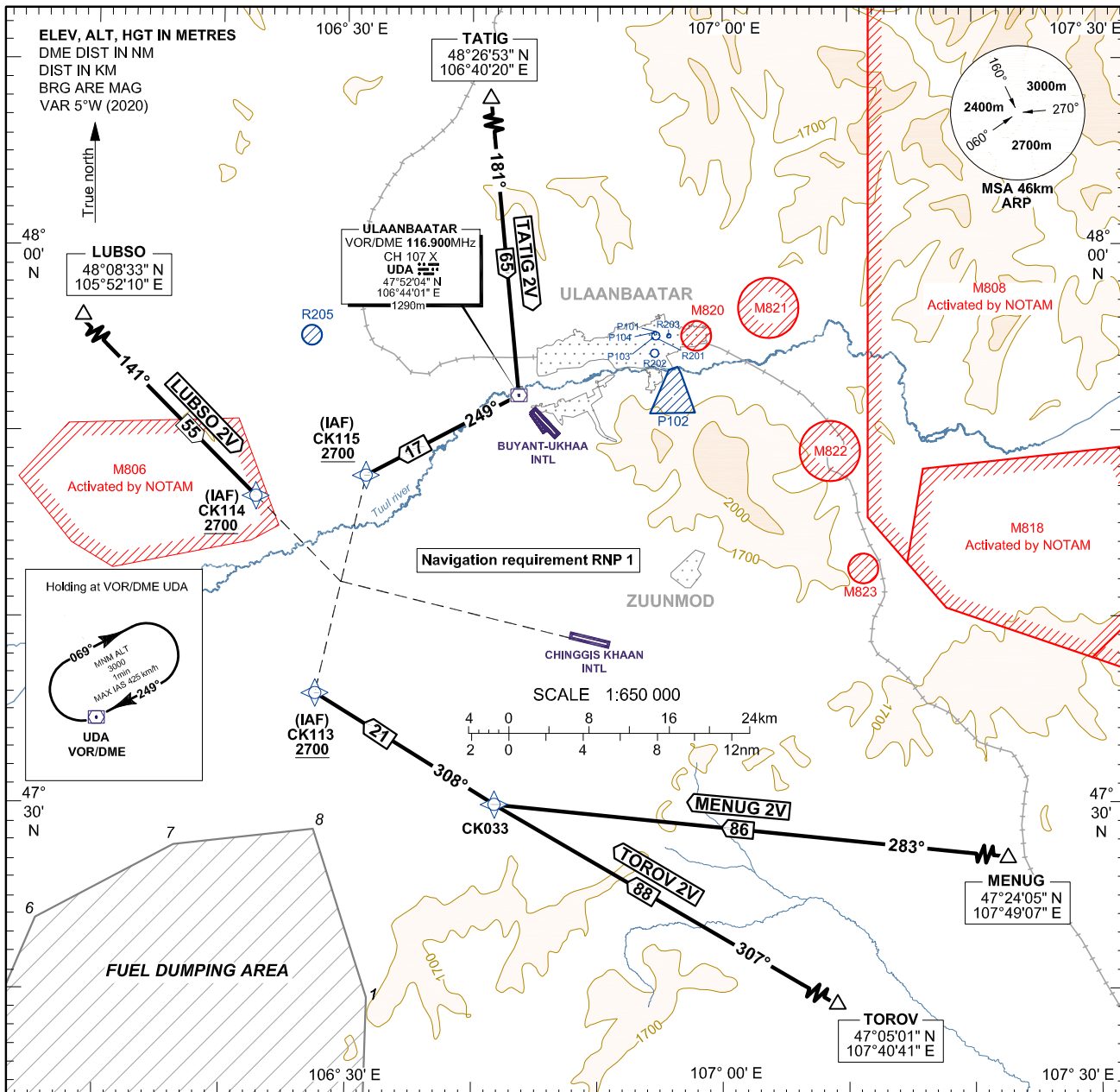


**STANDARD ARRIVAL CHART -  
INSTRUMENT (STAR) - ICAO**

APP 120.000  
TWR 129.000

**ULAANBAATAR/Chinggis Khaan (ZMCK)  
RNAV(GNSS) RWY 11  
LUBSO 2V, TOROV 2V  
MENUG 2V, TATIG 2V**



TRANSITION ALTITUDE 3900  
TRANSITION ALTITUDE 4200 (QNH ≥ 1031 hPa)

Path descriptor	Fix identifier	Flyover	Course °(M°T)	Magnetic Variation	DIST, km	Turn direction	Altitude, m	Speed, (km/h)	Coordinates	Navigation performance
<b>MENUG 2V ARRIVAL</b>										
IF	MENUG	-	-	-5.4	-	-	-	-	47 24 04.59N 107 49 07.44E	RNP 1
TF	CK033	-	283(277.9)	-4.9	85.96	-	-	-	47 30 05.75N 106 41 18.27E	RNP 1
TF	CK113	-	308(303.0)	-4.8	20.95	-	+2700	-	47 36 19.05N 106 27 14.61E	RNP 1
<b>TOROV 2V ARRIVAL</b>										
IF	TOROV	-	-	-5.3	-	-	-	-	47 05 01.42N 107 40 41.21E	RNP 1
TF	CK033	-	307(302.2)	-4.9	88.09	-	-	-	47 30 05.75N 106 41 18.27E	RNP 1
TF	CK113	-	308(303.0)	-4.8	20.95	-	+2700	-	47 36 19.05N 106 27 14.61E	RNP 1
<b>LUBSO 2V ARRIVAL</b>										
IF	LUBSO	-	-	-4.6	-	-	-	-	48 08 32.79N 105 52 10.21E	RNP 1
TF	CK114	-	141(136.1)	-4.8	55.24	-	+2700	-	47 46 59.20N 106 22 50.69E	RNP 1

COORDINATES OF DUMPING AREA		
Points	LAT (N)	LONG (E)
1	47°19'53"	106°30'51"
2	47°08'25"	106°29'58"
3	47°03'47"	106°13'47"
4	47°09'23"	106°01'43"
5	47°14'52"	105°58'22"
6	47°24'31"	106°04'45"
7	47°28'19"	106°15'47"
8	47°28'59"	106°26'54"

CHANGE: BRG changed; Editorial.