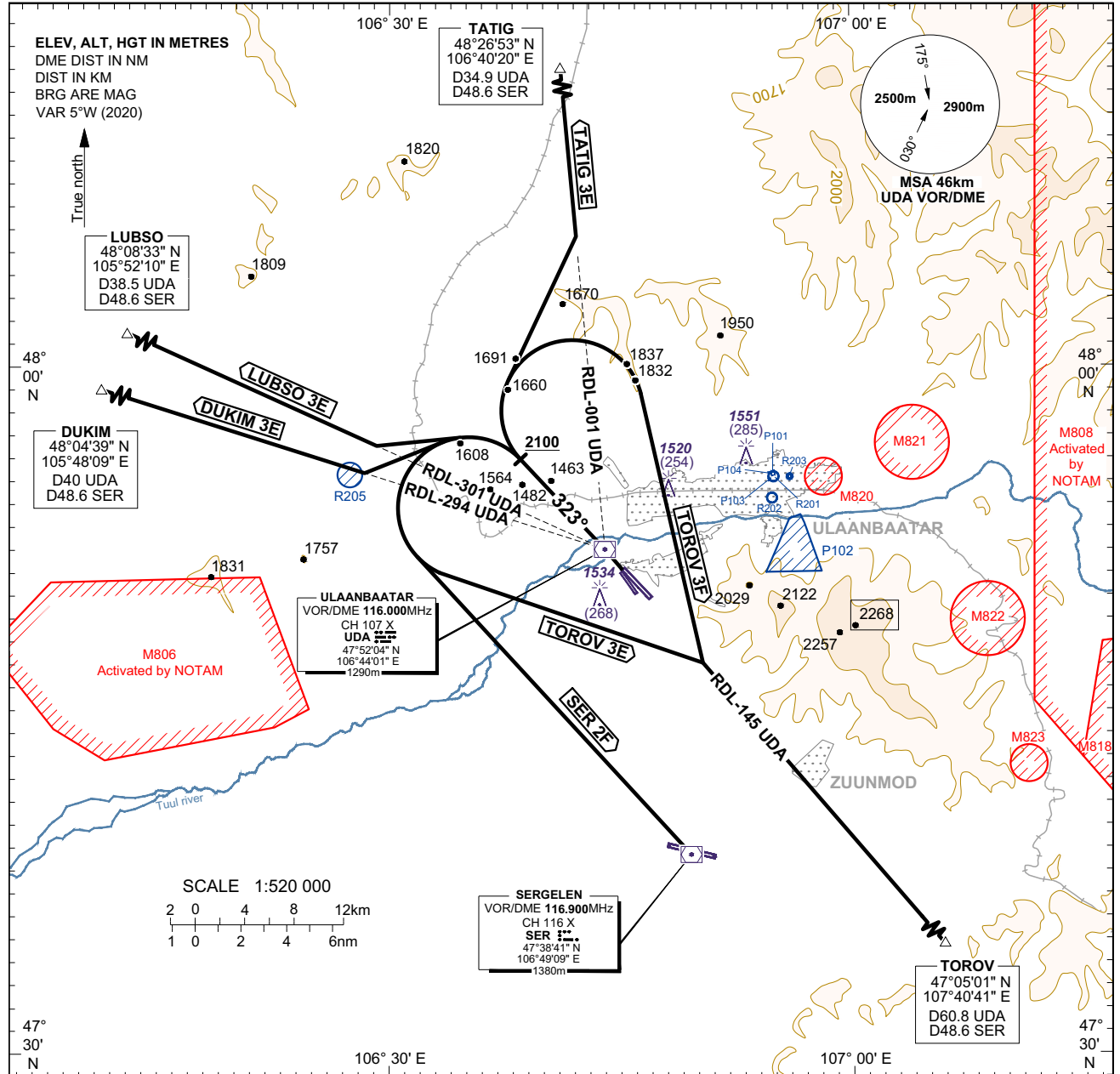


**STANDARD DEPARTURE CHART-  
INSTRUMENT (SID) - ICAO**

HEIGHTS RELATED TO  
THR RWY 14 - ELEV 1266

APP 120.000  
TWR 132.700  
ATIS 125.000

**ULAANBAATAR/Buyant-Ukhaa (ZMUB)  
VOR/DME RWY 32  
TATIG 3E, TOROV 3E/3F  
SER 2F, DUKIM 3E, LUBSO 3E**



**PDG: 3.6% is required until ALT 2100.**

TRANSITION ALTITUDE 3900  
TRANSITION ALTITUDE 4200 (QNH ≥ 1031 hPa)

**RIGHT**

**For TATIG 3E:**  
Climb RWY HDG 323° to ALT 2100 or above, turn right to intercept and proceed via RDL-001° UDA, to TATIG.

**For TOROV 3F:**  
Climb RWY HDG 323° to ALT 2100 or above, turn right to intercept and proceed via RDL-145° UDA to TOROV.

**LEFT**

**For LUBSO 3E:**  
Climb RWY HDG 323° to ALT 2100 or above, turn left to intercept and proceed via RDL-301° UDA, to LUBSO.

**For DUKIM 3E:**  
Climb RWY HDG 323° to ALT 2100 or above, turn left to intercept and proceed via RDL-294° UDA, to DUKIM.

**For SER 2F:**  
Climb RWY HDG 323° to ALT 2100 or above, turn left and direct to SER VOR/DME.

**For TOROV 3E:**  
Climb RWY HDG 323° to ALT 2100 or above, turn left to intercept and proceed via RDL-145° UDA, to TOROV.

RVR	550m
-----	------

Ground Speed	km/h	205	240	280	315	350	390	425	460	500
	kt	110	130	150	170	190	210	230	250	270
Rate of Climb at 3.3%	m/s	1.88	2.20	2.57	2.89	3.21	3.58	3.90	4.22	4.58
	ft/min	368	434	501	568	635	702	769	835	902
Rate of Climb at 3.6%	m/s	2.05	2.40	2.80	3.15	3.50	3.90	4.25	4.60	5.00
	ft/min	401	474	547	620	693	766	838	911	984

CHANGE: Editorial.